

# LEACH<sup>®</sup> INTERNATIONAL CORPORATION

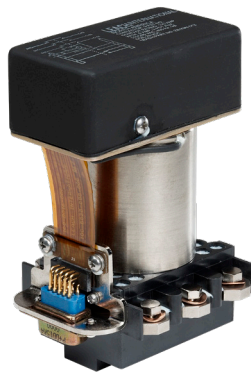
## BUSBAR-MOUNTED CONTACTORS

Leach busbar-mount contactors are compact, lightweight and simple to install. Designed for high reliability applications, the WB, ZB and HB lines are significant additions to the component lines currently available to the aerospace and power switching markets. To learn more, please contact one of our sales representatives [Leachcorp.com/contact](http://Leachcorp.com/contact)

### Features

- Dust-sealed design
- Weigh 1.2 to 2 lbs
- Meets Mil-PRF-6106 environmental requirements for mechanical shock, vibration and temperature fluctuations
- Engineered for "quick change" installation and configured to be mounted in any direction

The HB series has been engineered with ground fault protection to ensure fast isolation within milliseconds in case of a fault.



This document is designed for initial selection and comparison of products. Please contact Leach International Corporation for further information or for a LEACH<sup>®</sup> Product Control Drawing (PCD)

APPROVED FOR PUBLIC RELEASE.

6900 Orangethorpe Avenue  
Buena Park, CA 90620  
(714) 736-7598  
[www.leachcorp.com](http://www.leachcorp.com)