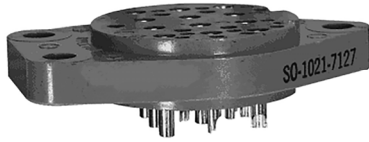


**Basic socket series designation for:**

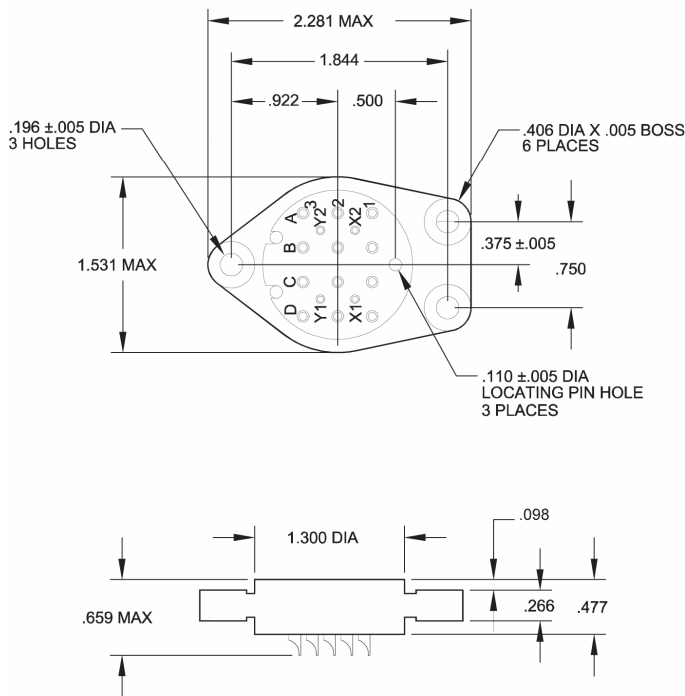
V110, V210, V310, V710, F410, P510

**Designed to the standards and requirements of:**

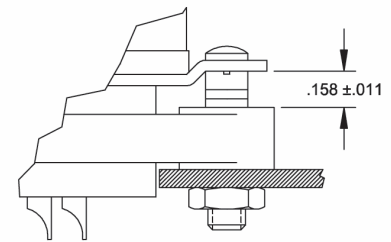
MS 25462-1



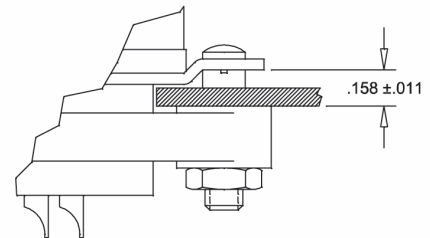
## SOCKET DRAWING



## HARDWARE MOUNTING



TOP MOUNTED



BOTTOM MOUNTED

## GENERAL CHARACTERISTICS

1. Supplied with mounting hardware (SO-1021-7127) or without mounting hardware (SO-1021-7126)	
2. Standard tolerances	.xx ±. – xxx ± .010
3. Weight	.08 lbs. max
4. Operating temperature	-70° C to +125° C